

VISKON-AIRE* Air Filter Products

SuperCel 24 V Eco HEPA Filter

Viskon-Aire* SuperCel 24 V Eco HEPA filter is designed to withstand the toughest operating environments. The SuperCel 24 V HEPA filter is specifically designed for high flow applications that require HEPA filtration at the lowest possible pressure drop while maintaining their specified penetration efficiency. The V pleat formation has a penetration efficiency of 99.99% at 0.30 μm and can withstand high air flows exceeding 600 FPM and a pressure drop of 1.0" w.g. while maintaining the integrity of the filter.

The Visikon-Aire SuperCel 24 V Eco HEPA filter is manufactured with "PerForm" wet laid micro fiberglass media. The SuperCel 24 V filter delivers HEPA efficiency for the life of the installation. The filter is designed with optimized pleat geometry and surface area to minimize energy usage and maximize particle loading, providing extended life and the lowest pressure drop possible. Each pack is potted within a non-corrosive plastic frame to eliminate bypass in the filter. The SuperCel 24 V HEPA filter incorporates recessed carry-all handles for ease of handling and installation.

The media area is optimized, and the pleat geometry allows for the lowest pressure drop possible, in some cases the SuperCel 24 V Eco HEPA may have less media area than competitive HEPA filters, yet will still have an overall lower ΔP .

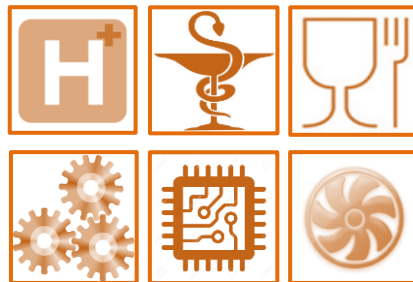
The Visikon-Aire* SuperCel 24 V Eco HEPA is tested to ISO EN1822 Test Standard.



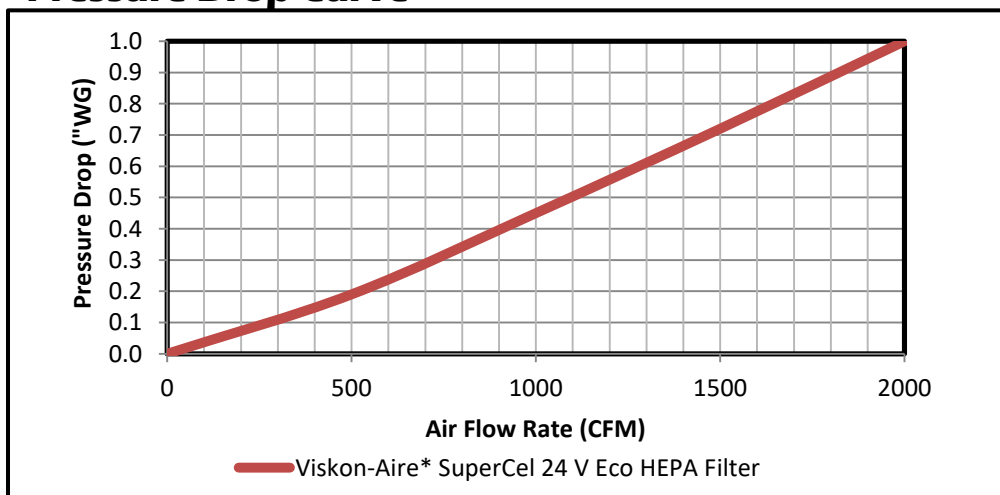
The Visikon-Aire* SuperCel 24 V Filter Benefits:

- Longer service life due to optimized pleat geometry and large surface area - 375 sq. ft.
- Low pressure drop (ΔP) at 600 FPM 1.00" w.g.
- Two component continuous polyurethane gasket
- All plastic construction with built-in handles
- Chemical resistant ABS plastic construction
- 100% RH resistance
- Maximum Temperature 175°F (79.4°C)

Performance	Results
Pressure Drop @ 2000 CFM:	1.00" w.g. (249Pa)
Efficiency:	0.3 μm 99.99% (H13)
Final Pressure Drop:	2.5" w.g. (622 Pa)
Media:	Perform high permability glass
Media Area:	375 sq. ft (34.84)



Pressure Drop Curve



“When Clean Air is Critical”

Performance Technical Data:

Viskon-Aire* Model Number	ISO EN1822 HEPA Class	Actual Dimensions Inches (mm)			Capacity CFM (m ³ /hr)	Initial Pressure Drop inches w.g. (Pa)	Media Area ft ² (m ²)
		Height	Width	Depth			
VASCV24X24-ECO	H13	24" (610)	24" (610)	11.5" (292)	2000 (3398)	1.00" w.g. (249 Pa)	375 ft ² 34.84 m ²
VASCV12X24-ECO	H13	12" (305)	24" (610)	11.5" (292)	1000 (1699)	1.00" w.g. (249 Pa)	188ft ² 17.47 m ²
VASCV18X24-ECO	H13	18" (457)	24" (610)	11.5" (292)	1,500 (2,548)	1.00" w.g. (249 Pa)	280 ft ² 26.01 m ²
VASCV12X12-ECO	H13	12" (305)	12" (305)	11.5" (292)	500 (850)	1.00" w.g. (249 Pa)	97ft ² 9.01 m ²

Performance Data Notes for Visikon-Aire Filters:

1. Pressure drop represents inches of water (1.00" w.g.) with the filter being in a clean condition. Final pressure drop is recommended to 2.5" w.g., however, it is recommended that the pressure drop change should be selected on the basis of life cycle costing that optimizes the best energy saving in HVAC systems or energy output when applied to gas turbine machinery.
2. Efficiency is based upon ISO EN1822
3. Note: Dimensions are exact

Product Shipping & Packaging Information:

Filter Size	Actual Dimensions Inches (mm)			Weight Lbs (kg)	Packaging	Carton Dimensions Inches (mm)
	Height	Width	Depth			
VASCV24X24-ECO	24" (610)	24" (610)	11.5" (292)	35 Lbs. (15.88 kg)	One per carton	25" x 13" x 25" (635 x 330 x 635)
VASCV12X24-ECO	12" (305)	24" (610)	11.5" (292)	25 Lbs. (11.34 kg)	One per carton	25" x 13" x 13" (635 x 330 x 330)
VASCV18X24-ECO	18" (457)	24" (610)	11.5" (292)	31 Lbs. (14.06 kg)	One per carton	25" x 13" x 18" (635 x 330 x 457)
VASCV12X12-ECO	12" (305)	12" (305)	11.5" (292)	17 lbs. (7.71 kg)	One per carton	13" x 13" x 13" (330 x 330 x 330)

Viskon-Aire Corporation has a policy of continuous research & development and reserves the right to change the design and specifications without notice.

Viskon-Aire* High Performance Pre-filter Products

Viskon-Aire Corporation manufactures a complete line of complementary pre-filter products. Visikon-Aire offers a wide efficiency range of 4V-Cell filter from MERV 13, to MERV 16 to protect your SuperCel 24 V HEPA filter from prematurely loading with particulate. With Visikon-Aire's high quality pre-filter portfolio, you can select filters which will protect your final filter investment and ensure long life of the total filter system, contact your Visikon-Aire representative, or your Visikon-Aire in-house factory representative.

Viskon-Aire Corporation
Telephone: (410)-543-8802 ✦ Email: sales@viskon-aire.com
F.O.B. Salisbury, Maryland
www.Viskon-Aire.com